

DANSANI MATCH SHOWER ENCLOSURES

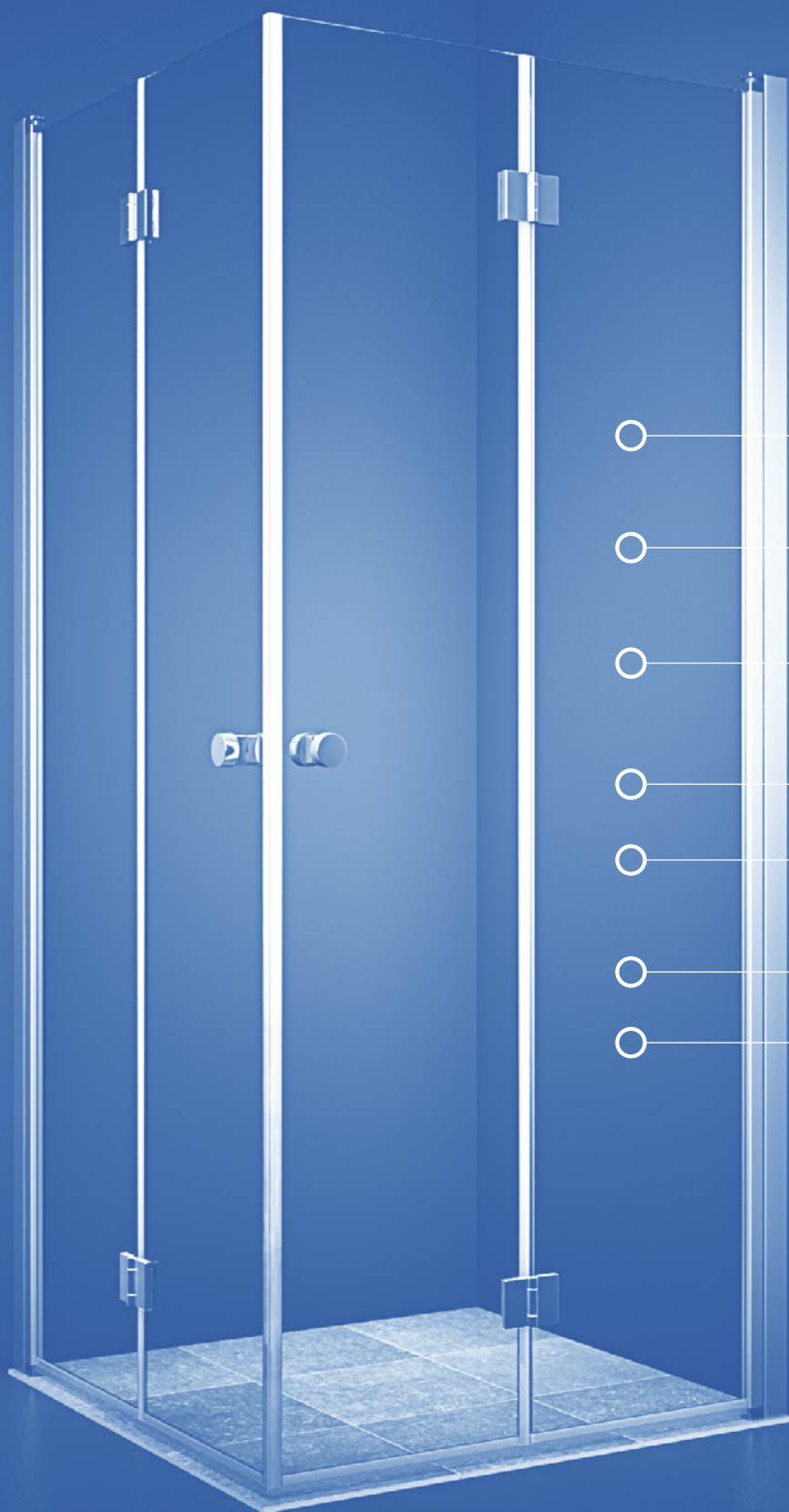
Create
your
personal
space



Create your personal space

When choosing Dansani you will get

- Assurance in selecting a bathroom expert with more than 35 years of experience
- Danish Design and solid craftsmanship manufactured in Denmark
- Led illumination of high quality, because we prioritize excellence and precision in our lighting
- Sustainable products in order to protect and care for our environment
- Easy and fast delivery all year round





Dansani Match /

User friendly shower enclosure solutions in stylish design with high quality functional details.

- All versions can be fitted for either left or right hand applications without modification or the need for tools to do so
- Elegant design with slim profiles in a beautiful satin finish combined with chrome details
- Easy clean glass treatment on the inside makes for an easy life in your everyday routine
- Perfect installation – adjustable and easy to fit
- With a height of 200 cm an effective enclosure can be created, in particular combined with overhead showers
- 6 mm hardened safety glass with EasyCare-Treatment
- 10 years warranty against manufacturing defects

EasyCare / Makes cleaning much simpler

When choosing Dansani Showers, you have an attractive, clear glass surface with minimum cleaning effort required. EasyCare is a German, environmentally-friendly product, which is certified by the independent laboratory SGS Institute Fresenius in accordance with the OECD Guideline 2009. Dansani's Match Shower series is coated with the tough and environmentally-friendly EasyCare treatment as standard, making it harder for dirt and limescale to deposit. Even after the glass has been wiped 30,000 times. Just wipe the glass with a soft cloth after use, and your glass will look nice for many years to come.

TWO HINGED DOORS 180 DEGREES

When the enclosure is not in use the doors simply fold back on themselves into the corner freeing up valuable space in small rooms.

MATCH A+A

Two hinged doors

682.-

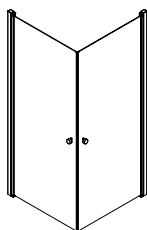
any size in clear glass

MATCH A+A

Two hinged doors

822.-

any size in frosted glass



A + A

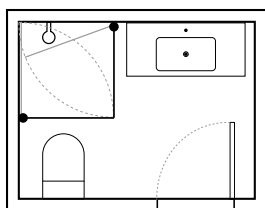


Mindful design

Dansani Match is full of details and our designers have created a showering solution with a simple yet very effective expression. The soft profiles' slim, timeless and elegant expression hides a number of feature functionalities that ensure a stable and well-functioning result. Designed around you for years to come.



01 The simple profiles conceal a rise and fall hinge action, as well as the possibility of adjustment to ensure the doors operate perfectly every time. A chrome cover cap finishes the overall expression. 02 Simple and ergonomic knob handle comes as standard with all door versions. 03 The clever bifold hinge folds the door together taking up next to no space yet providing full access when needed. 04 On the inside of the bifold door the hinge part is concealed and flush with the actual glass panel. Beautiful, practical design in action.



Design suggestion

- Design your new shower enclosure to perfectly exploit the space available. From 70-100 cm
- The doors open both in and out at 180 degrees – perfect space savers
- Frosted glass available on select models
- Extra high seals can be purchased separately
- Neat add on floor profile kit, keeps the water inside the actual showering area

TWO BIFOLD DOORS

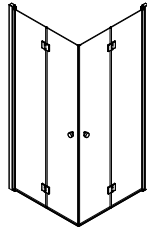
Shower enclosure with two bifold doors. Ideal for very small rooms where space is at a premium. Deceptively simple, yet clever design.

MATCH B+B

Two bifold doors

822.-

any size in clear glass



B + B

- The doors also open inwards taking up very little space
- Bifold doors can be combined with other doors as well as fixed panels from 70-140 cm
- Extra high seals can be purchased separately
- Neat add on floor profile kit, keeps the water inside the showering area

The clever bifold door also solves the problem with water dripping onto the floor when the door is opened. The doors fold into the wet area thereby keeping the water inside. This folding function also provides a large opening as well as room for shower valves and other fittings.



FIXED PANEL AND BIFOLD DOOR

Very practical in the small bathroom, as the door opens inwards into the wet area.

No water drops on the floor outside – perfect way to begin or end the day.

MATCH B+D+4

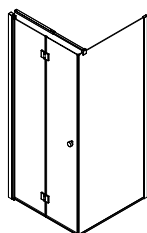
Fixed panel and bifold door

807.-

70/80/90/100 cm in clear glass

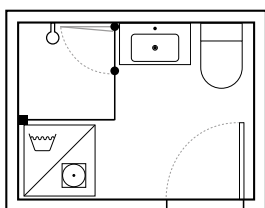
945.-

120/140 cm in clear glass



B + D + 4

Design suggestion

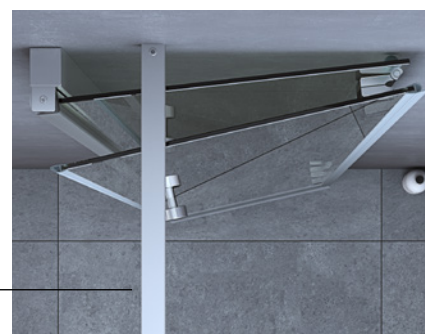


BIFOLD DOOR IN OPTIONAL SIZES

- Bifold doors can be combined with fixed panels as well as other doors from 70-140 cm
- Extra high seals can be purchased separately
- Neat add on floor profile kit, keeps the water inside the showering area

Telescopic support rail can be adjusted from 60-100 cm.

Please note further details about support for fixed panels on page 29.



TWO HINGED DOORS WITH IN-LINE PANELS

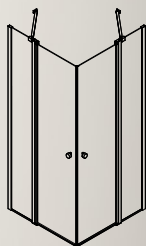
In a small room you can use the space optimally by choosing the hinged door with in-line panel. This option lets you furnish close up to the enclosure itself. Perfect way to exploit limited space.

MATCH C+C

Two hinged doors with in-line panels

682.-

any size in clear glass



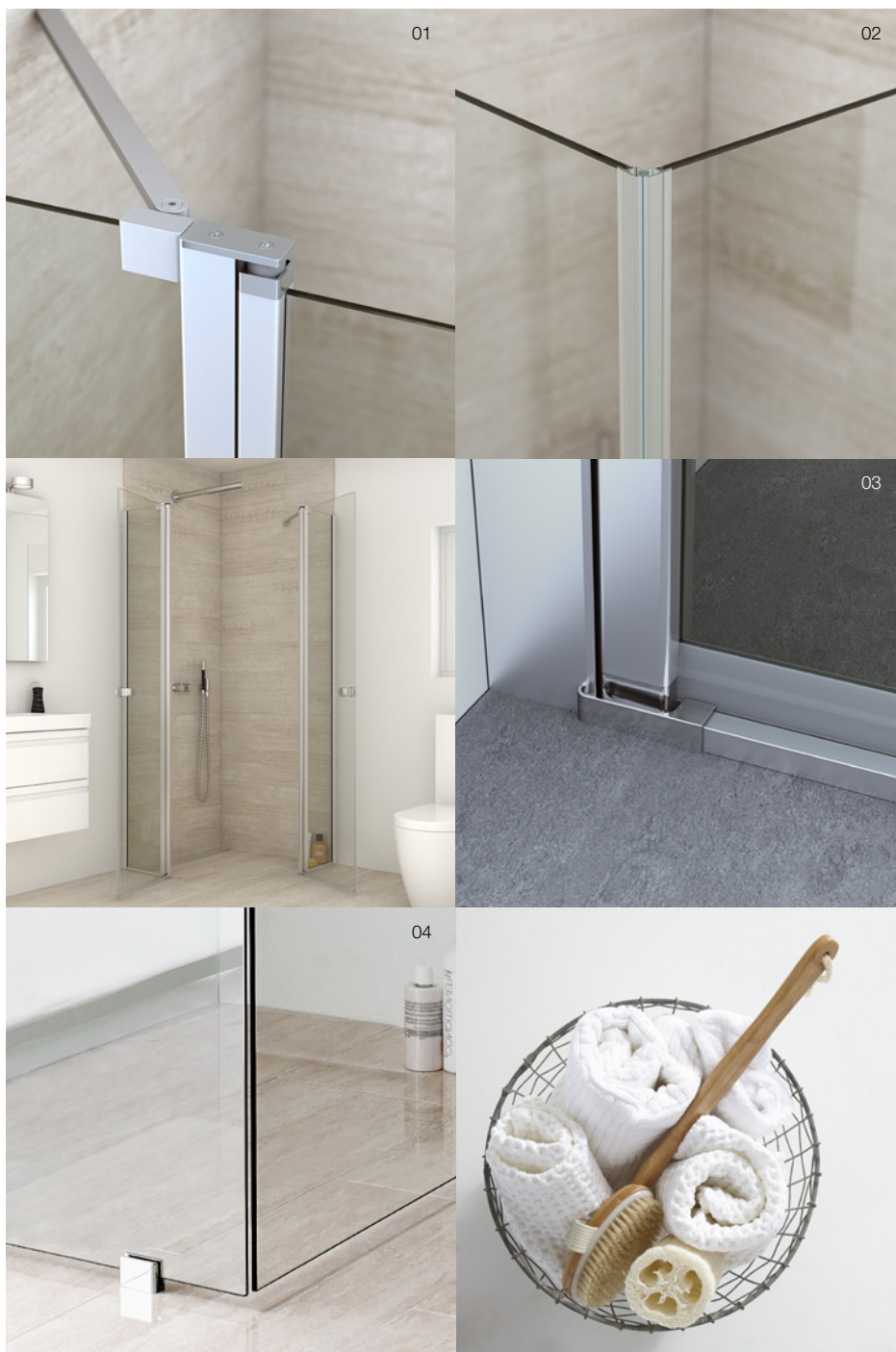
C + C

- Hinged door with in-line panel can be combined with other doors as well as fixed panels from 70-140 cm
- Wall support supplied as standard
- Extra high seals can be purchased separately
- Neat add on floor profile kit, keeps the water inside the showering area



Design your shower room

The flexible assortment of MATCH enables you to combine, mix and MATCH to create the perfect scenario to meet your requirements. Timeless design built to last for many years to come.



01 The design of the profiles is simple and stylish. No visible fixings or screws showing, and the profiles are finished off with perfectly matching chrome covers. 02 The magnetic seal keeps the doors shut when in use. The seals have been developed with a special matt surface that makes the daily use a pleasure as the doors open and close softly and easily. 03 The smart floor profile kit available as an additional part ensures the water stays just where you want – inside the enclosure. The floor profile can also be retro fitted at a later stage if required. 04 The fixed panel includes an alternative floor bracket for a lighter wetroom look



TWO QUADRANT HINGED DOORS

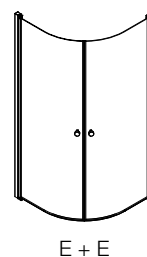
Simple and stylish enclosure with two curved shower doors. The doors open both in and out freeing up valuable space when not in use. Also available in frosted glass in 90 cm version.

MATCH E+E

Two quadrant hinged doors

682.-

any size in clear glass



- Create standard or offset enclosures from 80-100 cm to optimise all available space
- The doors also open inwards to open up the room
- 90 cm version available in frosted glass also
- Extra high seals can be purchased separately
- Practical add on floor profile kit, keeps the water inside the showering area

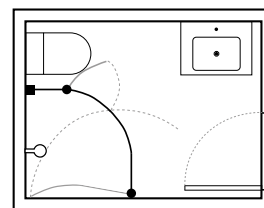
MATCH E+E

Two quadrant hinged doors

822.-

90 cm in frosted glass





Design suggestion

- Standard and offset solutions from 80-100 cm – great use of space
- The doors open inwards to take up less space
- Extra high seals can be purchased separately
- Practical add on floor profile kit, keeps the water inside the showering area



QUADRANT HINGED DOOR AND QUADRANT HINGED DOOR WITH IN-LINE PANEL

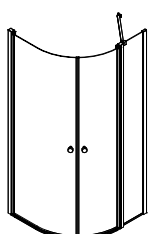
Smart version of a quadrant enclosure. The in-line panel enables you to furnish right up close to the shower enclosure as well as allowing space for the shower fittings inside the wet area.

MATCH E+F

Quadrant hinged door and quadrant hinged door with in-line panel

682.-

any size in clear glass



E + F



TWO QUADRANT HINGED DOORS (90 DEGREES) WITH IN-LINE PANEL

The combination of two 90° hinged doors gives you an elegant 3-sided shower enclosure which exploits the even wall space and frees valuable floor space in the room with curved hinged doors, which can be folded inwards.

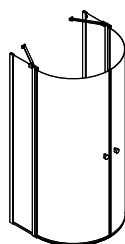
- The doors open inwards to take up less space
- Extra high seals can be purchased separately
- Practical add on floor profile kit, keeps the water inside the showering area
- Wall support supplied as standard

MATCH G+G

Two quadrant hinged doors
(90 degrees) with in-line panel

958.-

90 cm in clear glass



G + G

QUADRANT HINGED DOOR (90 DEGREES) WITH IN-LINE PANEL AND FIXED WALL

By combining the 90° hinged door with fixed panels this gives you a shower enclosure with corner entry in 90x120/130/140/150/170/190 cm with space enough for generous movement within the shower enclosure itself.

- Optional offset solutions – great use of space
- Extra high seals can be purchased separately
- Practical add on floor profile kit, keeps the water inside the showering area



MATCH G+D+2/3

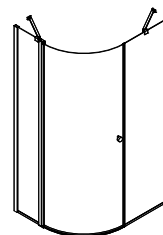
Quadrant hinged door (90 degrees)
with in-line panel and fixed wall

875.-

70/80/90/100 cm in clear glass

1.013.-

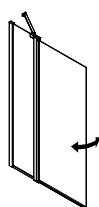
120/140 cm in clear glass



G + D + 2/3

BATH PANEL WITH HINGED DOOR HEIGHT 155 CM

Just because the bathroom is small, it does not have to feel that way. Say goodbye to the shower curtain and choose a MATCH bath panel instead. The elegant glass pane almost appears to have no profile and creates a feeling of much more space in the room. It is very simple screen for a bath tub, which does, however, have a practical secret. The opening mechanism is the hinge on a glass panel mounted on the wall. This means that the screen can be placed up against any brassware when the shower is not in use. The wall support is supplied as standard.



H

MATCH H

Bath panel with hinged door

341.-

100 cm in clear glass





HINGED DOOR AND FIXED PANEL

This solution enables you to make the most of your shower room, perhaps having a larger basin than you thought possible or maybe a further storage cabinet.

For asymmetrical solutions turn to the next page.

MATCH A+D+2/3

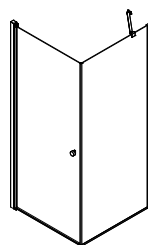
Hinged door and fixed panel

737.-

70/80/90/100 cm in clear glass

875.-

120/140 cm in clear glass



A + D + 2/3

Choose between the wall support or the telescopic support rail, that can be adjusted from 60-100 cm.

Please note further details about support for fixed panels on page 29.

- Standard and offset solutions from 70-140 cm – great use of space
- Extra high seals can be purchased separately
- Practical add on floor profile kit, keeps the water inside the showering area
- For a more minimalist floating appearance you can also use the floor bracket that is included





ASYMMETRICAL SHOWER ENCLOSURE WITH HINGED DOOR AND FIXED PANEL

If your bathroom is narrow or long, a good choice could be a fixed panel of 120 cm or 140 cm to create a spacious solution. If you have ample space, why not combine the fixed panel with a 100 cm hinged door creating a substantial showering area. Can be installed with wall support as well as fixed or telescopic support rails. See page 29

MATCH A+D+2/3

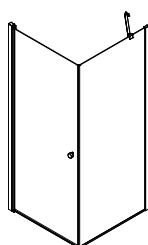
Hinged door and fixed panel

737.-

70/80/90/100 cm in clear glass

875.-

120/140 cm in clear glass



A + D + 2/3

MATCH A+D+2/3

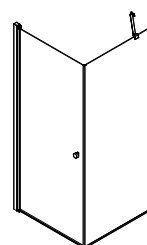
Hinged door and fixed panel

737.-

70/80/90/100 cm in clear glass

875.-

120/140 cm in clear glass



A + D + 2/3



MATCH I+2/3

Fixed panel with flipover

534.-

120 cm in clear glass

FIXED WALL WITH FLIP-OVER PANEL

This fixed 90 cm panel comes with a 30 cm flip-over hinged panel ensuring water stays inside the enclosure for walk in solution. The flip-over panel can be located in predefined positions, ensuring easy and effective use. Can be installed with wall support as well as a fixed or telescopic support rail. See page 29.



I + 2/3



FIXED PANEL

Classic and simple wetroom walk in shower enclosure with either wall support or telescopic support rail. Please note further details about support for fixed panels on page 29.

MATCH D+2/3

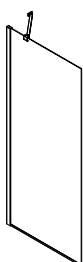
Fixed panel

396.-

70/80/90/100 cm in clear glass

534.-

120/140 cm in clear glass



D + 2/3

MATCH D+4

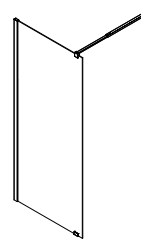
Fixed panel (with floor bracket)

396.-

70/80/90/100 cm in clear glass

534.-

120/140 cm in clear glass



D + 4



MATCH D+D+2/3 (2 PCS.)

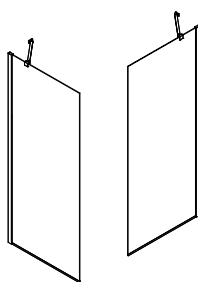
Two fixed panels

792.-

70/80/90/100 cm in clear glass

1.068.-

120/140 cm in clear glass



D + D + 2/3 (2 pcs.)

WALK IN WITH TWO FIXED PANELS

Available in a variety of size combinations – have it your way. For lots of space and plenty of room to move around, this walk in wetroom enclosure is perfect if you want an elegant solution with a very open minimalist expression. Available with either support rail, wall supports or telescopic support rails to suit.

Various recess solutions

Do you require a shower door for a recess application, Match offers you three different versions. Select the model that suits your particular shower room best and rest assured you have made the right choice.

Optional wall profile for doors used in a recess will provide a power shower proof solution.

See more on page 30



RECESS SOLUTION WITH HINGED DOOR

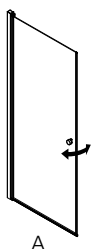
This simple recess hinged door gives good access in and out of the wet area and comes in several sizes, some of which are also available in frosted glass.

MATCH A

Hinged door

341.-

any size in clear glass



A

RECESS SOLUTION WITH BIFOLD DOOR

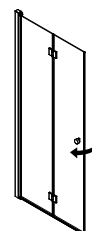
Very practical choice for the small room as the bifold door opens inward into the wet area. This solution also ensures that all water remains inside the recess.

MATCH B

Bifold door

411.-

any size in clear glass



B

- The door folds inwards too
- For all recess applications you can also purchase a 45 degree neo angle accessory kit
- Tall PVC seals are also available
- Practical add on floor profile kit, keeps the water inside the showering area
- Additional wall profile for power shower proof installations. NB! with the use of this profile the door will only open outwards

RECESS SOLUTION WITH HINGED DOOR AND IN-LINE PANEL

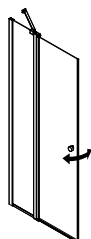
Smart solution that enables you to place furniture close to the shower door, thereby maximising the space at hand.

MATCH C

Hinged door with in-line panel

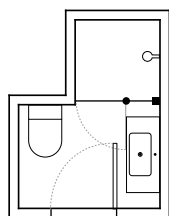
341.-

any size in clear glass



C

Design suggestion



HINGED DOOR

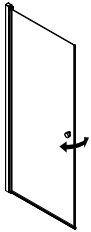
For even the smallest of rooms including the guest shower room an effective showering solution is possible using the Match hinged door. Simply fold the door against the wall when not in use, and open up when required.

MATCH A

Hinged door

341.-

any size in clear glass



A

- The hinged door can be folded inwards freeing up floor space
- Selected sizes available in frosted glass
- Extra high seals can be purchased separately

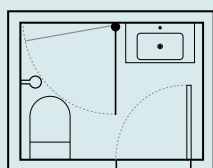
The built out wall hides all installations required whilst at the same time provides the perfect setting for adding a great showering solution.



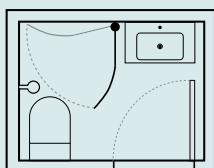
No room for a shower?

Match from Dansani - the ideal problem solver and of course with easy-clean glass

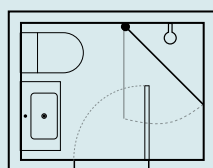
120 x 160 CM



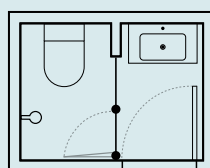
A80



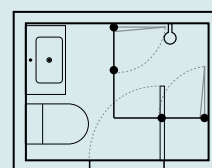
E80



A100

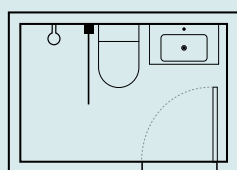


B90

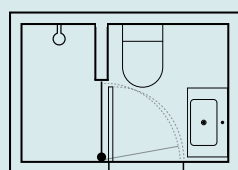


B90 + B90

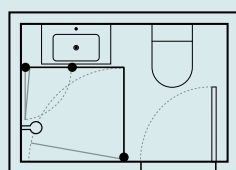
120 x 180 CM



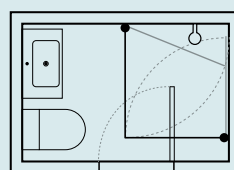
D70



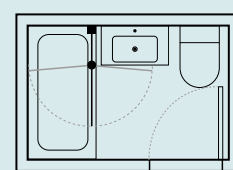
A70



A80 + B90

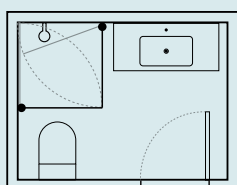


A90 + A100

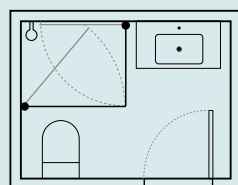


H100

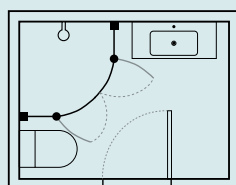
150 x 200 CM



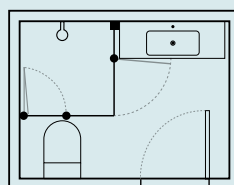
A80 + A80



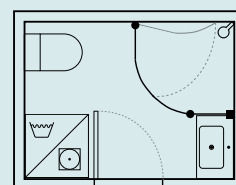
A80 + A100



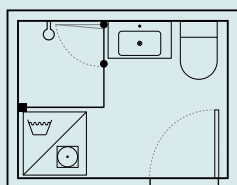
F90 + F90



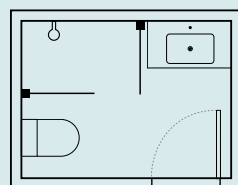
B90 + C90



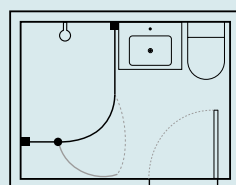
E80 + F100



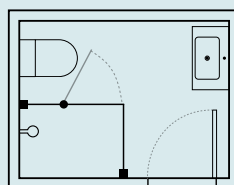
B80 + D80



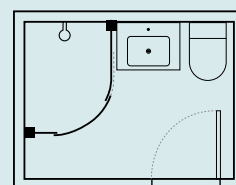
D70 + D70



D70 + G90

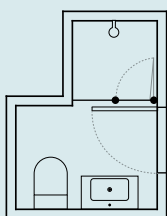


C100 + D90

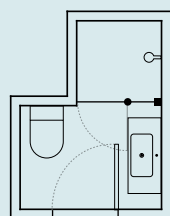


X70

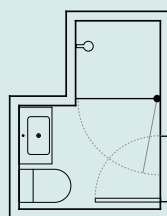
RECESS 90 CM 220X150 CM



B90



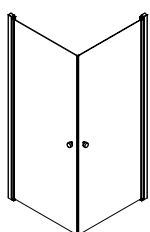
C90



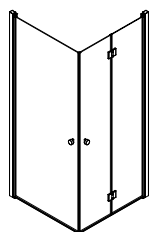
A90

Combination possibilities

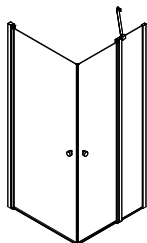
From the 8 base models in Dansani Match you can easily and simply create a large number of different shower enclosure combinations. It is possible to combine the individual base models with each other across the entire range. All versions can be installed for both left and right hand opening. There are many solutions and sizes to select from yet easy to order using this simple system. For example if you want a 80x80 cm square corner setup simply choose 2 pcs. of the A80



A + A



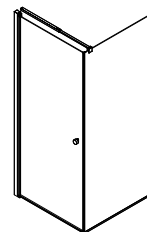
A + B



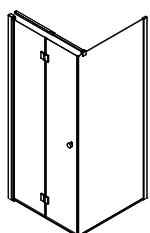
A + C



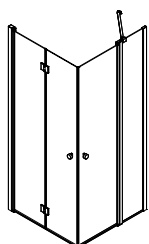
A + 1



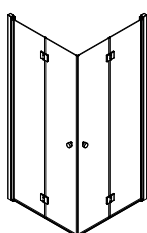
A + D + 4



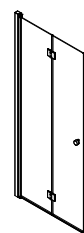
B + D + 4



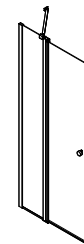
B + C



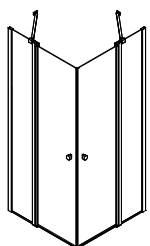
B + B



B + 1



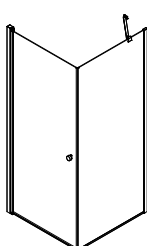
C + 1



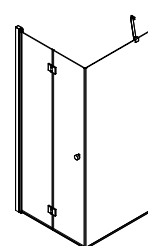
C + C



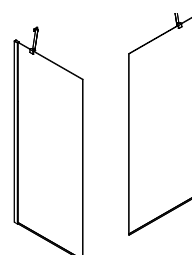
D + 2/3



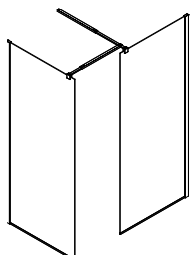
A + D + 2/3



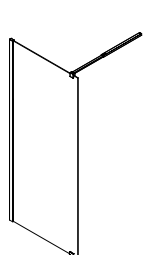
B + D + 2/3



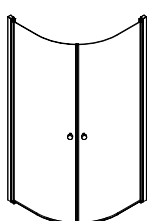
D + D + 2/3 (2 pcs.)



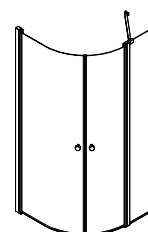
D + D + 4 (2 pcs.) + 5



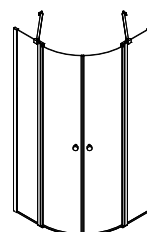
D + 4



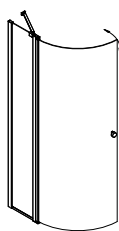
E + E



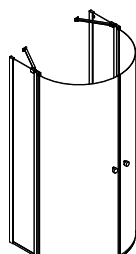
E + F



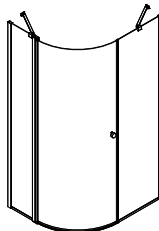
F + F



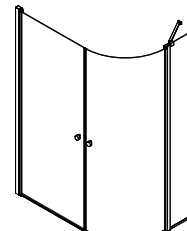
G



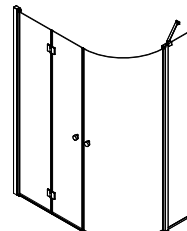
G + G



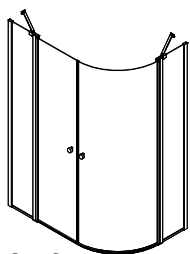
G + D + 2/3



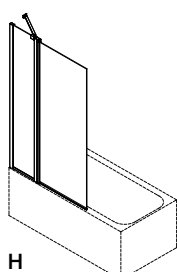
A + G



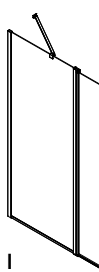
B + G



C + G



H



I

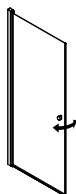
Dansani Match base models

Can be used individually or combined in numerous ways and sizes.

Please see the left page for more details.

Models A-G are upon request also available in sizes 2cm larger than listed here.

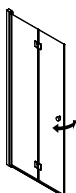
For more information please visit dansani.co.uk



A - Hinged door (180 degrees) - height 200 cm

Satin profiles

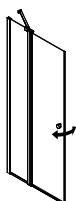
Model:	Min/max adjustment:	Door	Set	Recess wall profile 1*	Recess wall profile 8*	Frosted glass 411.-	Clear glass 341.-
70		65-67	67-69	69,5-73,5	67,5-69,5	A70-02	A70-01
80		75-77	77-79	79,5-83,5	77,5-79,5	A80-02	A80-01
90		85-87	87-89	89,5-93,5	87,5-89,5	A90-02	A90-01
100		95-97	97-99	99,5-103,5	97,5-99,5		A100-01



B - Bifold hinged door (180 degrees) - height 200 cm

Satin profiles

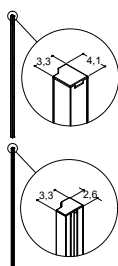
Model:	Min/max adjustment:	Door	Set	Recess wall profile 1*	Recess wall profile 8*	Clear glass 411.-
70		65-67	67-69	69,5-73,5	67,5-69,5	B70-01
80		75-77	77-79	79,5-83,5	77,5-79,5	B80-01
90		85-87	87-89	89,5-93,5	87,5-89,5	B90-01
100		95-97	97-99	99,5-103,5	97,5-99,5	B100-01



C - Hinged door (180 degrees) with in-line panel (incl. wall support)- height 200 cm

Satin profiles

Model:	Min/max adjustment:	Door +	Set	Recess wall profile 1*	Recess wall profile 8*	Clear glass 341.-
90		85-87	87-89	89,5-93,5	87,5-89,5	C90-01
100		95-97	97-99	99,5-103,5	97,5-99,5	C100-01



Add-on* for recess solutions, models A ,B and C:

Art. no.

Price:

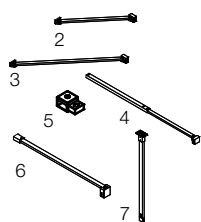
1 Recess wall profile incl magnetic seal for A (door), B (bifold) and C (door with in-line panel) adjustable	1600501	139.-
8 Recess wall profile incl magnetic seal for A (door), B (bifold) and C (door with in-line panel) slim profile without adjustment	1600535	70.-

*For recess applications a wall profile with magnetic seal is additionally required.

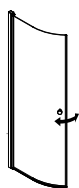
D - Fixed panel - height 197,5 cm
(Always add support)

Satin profiles

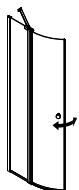
Model:	Min/max adjustment:	Wall	Set	Frosted glass 411.-	Clear glass 341.-
70	65-67		67-69	D70-02	D70-01
80	75-77		77-79	D80-02	D80-01
90	85-87		87-89	D90-02	D90-01
100	95-97		97-99	D100-02	D100-01
Model:	Min/max adjustment:	Wall	Set	Clear glass 479.-	
120	115-117		117-119	D120-01	
140	135-137		137-139	D140-01	


Add on support for fixed panels, model D+I:
Art. no.
Price:

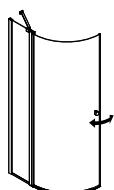
2 Wall support for model D70, 300 mm (fixed panel)	1600502	55.-
3 Wall support for model D80/D90/D100/D120/D140 + I120, 600 mm (fixed panel)	1600508	55.-
4 Telescopic support rail 60-100 cm for model D (fixed panel)	1600503	55.-
5 Connector kit for model D+D+4 (2 pcs)	1600504	14.-
6 Support rail 120 cm for model D (fixed panel). Can be cut to suit if necessary	1600527	55.-
7 Vertical ceiling support rail 100 cm for model D (fixed panel). Can be cut to suit if necessary	1600528	55.-


E - Quadrant hinged door (45 degrees) - height 200 cm
Satin profiles

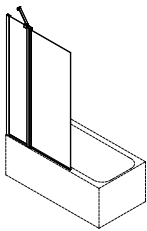
Model:	Min/max adjustment:	Door	Set	Frosted glass 411.-	Clear glass 341.-
80	60-62		77-79		E80-01
90	70-72		87-89	E90-02	E90-01
100	80-82		97-99		E100-01


F - Quadrant hinged door (180 degrees) with fixed panel (incl. wall support) - height 200 cm
Satin profiles

Model:	Min/max adjustment:	Door	Set	Clear glass 341.-
90	70-72		87-89	F90-01
100	80-82		97-99	F100-01



G - Quadrant enclosure door (90 degrees) with in-line panel (incl. wall support) - height 200 cm
Satin profiles

Model:	Min/max adjustment:	Door	Set	Clear glass 479.-
90	86-88		102	G90-01



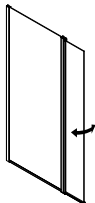
H - Bath panel with hinged door (180 degrees incl wall support)

Satin profiles

Model:	Height:	Min/max adjustment:	 Door + wall
100	155	95-97	


Clear glass
341.-

H100-01



I - Fixed panel 90cm with hinged 30cm Flip-over panel
(please add your preferred glass support)

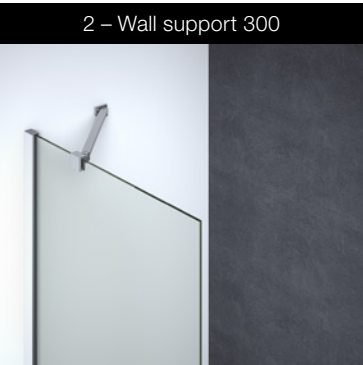
Satin profiles

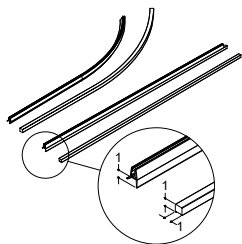
Model:	Min/max adjustment:	 Door
120	115-117	

Clear glass
479.-

I120-01

Details of support options for fixed panels



**Floor profile kit****- provides a power shower proof solution (CE-certified)**

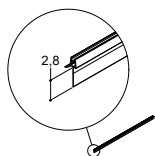
		Art.no.	Price:
Floor profile kit for square enclosures A, B, C	2 doors	1600520	55.-
Floor profile kit for recess applications 1+A/B/C	1 door	1600521	55.-
Floor profile kit for fixed panels D+A/B/C	1 door	1600522	55.-
Floor profile kit for quadrant enclosures, E, F	2 doors	1600523	55.-
Floor profile kit for quadrant enclosure G	2 doors	1600529	55.-
Floor profile kit for model G+D	1 door	1600530	55.-
Floor profile kit for model G+A/B/C	2 doors	1600533	55.-

Cut to suit the relevant enclosure on site. Can also be retro installed.

PVC seal, standard (18 mm)

	Art.no.	Price:
PVC seal for straight doors (qty 1)	1600565	18.-
PVC seals for curved doors model E, F (qty 2)	1600566	36.-
PVC seals for curved doors model G (qty 2)	1600567	36.-

Cut to suit the relevant enclosure on site.

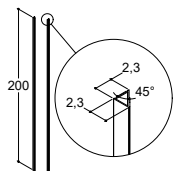
**PVC seal, tall (10 mm)****- for use on floors with large fall towards the drain (28 mm)**

	Art.no.	Price:
PVC seal - Tall for straight doors (2 pcs set)	1600505	36.-
PVC seal - Tall for quadrant doors (2 pcs set)	1600509	36.-
PVC seal - Tall for recess doors (1 pcs)	1600524	18.-
PVC seal, Tall for model G, G+D (2 pcs set)	1600531	36.-
PVC seal, Tall for model G+A/B/C (2 pcs set)	1600532	36.-

Cut to suit the relevant enclosure on site.

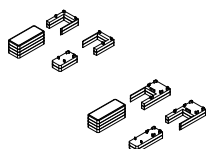
Magnetic seal

	Art.no.	Price:
Magnetic seal for A/B/C/E/F/G (qty 1)	1600606	18.-
Magnetic seal for D fixed panel (qty 1)	1600622	18.-

**450 accessory kit, door****- for use with neo angle installations**

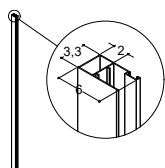
	Art.no.	Price:
Angled profile, satin (2 pcs)	1600506	88.-

Increases the size with 16 mm on both sides.

**Spacer kits**

	Art.no.	Price:
Spacer kit 2x 6mm for door door or door fixed panel. Chrome finish	1600628	36.-
Spacer kit 2x60mm door door and door fixed wall for exposed water supply	1600629	36.-

Spacer kits for adjustment of uneven floors

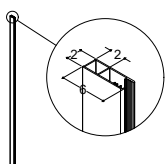


Profile for exposed water supply for A, B, E and 1

	Art.no.	Price:
Spacer profile 200cm for A, B and E satin finish	1600507	88.-
Spacer profile 197,5cm for 1 satin finish	1600534	88.-

Can be combined with all models.

Optional spacer profile for exposed water supply from 20-40 mm
The profile increases the overall installation size with 20 mm



Profile for exposed water supply for C, D, F and G

	Art.no.	Price:
Spacer profile 199,5cm for C, F and G satin finish	1600525	88.-
Spacer profile 197,5cm for D satin finish	1600526	88.-

Can be combined with all models.

Optional spacer profile for exposed water supply from 20-40 mm
The profile increases the overall installation size with 20 mm

NB! Standard chrome plated handle is included with all doors

You also have the option of purchasing an alternative handle solution to personalize your chosen enclosure.



Standard handle
(art. no. 1600609)



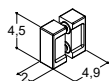
Minimal



Square



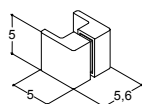
Long



Minimal

	Art.no.	Price:
Chrome	190330116	37.-

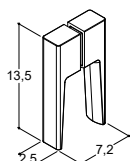
Please note: For solutions using two doors order 2 sets



Square

	Art.no.	Price:
Chrome	1600020	37.-

Please note: For solutions using two doors order 2 sets



Long

	Art.no.	Price:
Chrome	1600078	37.-

Please note: For solutions using two doors order 2 sets

Complete your experience

Exclusive accessory collection which makes everyday life with Dansani Shower an even bigger pleasure. Everything is designed to the smallest detail for optimum function.



Squeegee in silicone

Contemporary shower squeegee in a dark grey silicone. The slightly textured surface enables a firm grip. The squeegee comes with a practical hook that hangs on the edge of the glass.

Item no.: 1600162

27.-



Squeegee in a stringent design

Elegant chrome squeegee. The stringent and simple design is adapted to AIR and MATCH. The squeegee can hang directly on the edge of the glass using the included silicone hook.

Item no.: 1600012

27.-

Spare rubbers for squeegee

Item no. 1600017

8.-



Ergonomic squeegee

No more water drops that turn into unsightly limescale deposits. Smart shower squeegee which fits well into the hand and hangs elegantly in the accompanying bracket.

Item no.: 2400346

27.-

Spare rubbers for squeegee

Item no.: 2400500

8.-



Shower Corner

Smart stainless steel shelf. The shelf is built into the corner of the shower cubicle without the use of screws, but can also be retro fitted in an existing shower enclosure.

Item no.: 2400600

55.-



Practical hook

Set with two double hooks. The hooks can hang on the edge of the glass, on the inside or outside, and are practical for towels, brushes, sponges etc. Available in light grey or dark grey.

Light grey, item no.: 1600013

10.-

Dark grey, item no.: 1600163

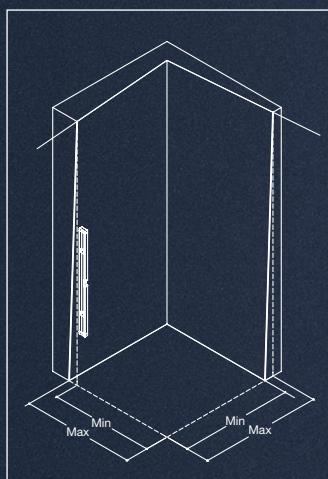
10.-

A perfect result / even on irregular surfaces

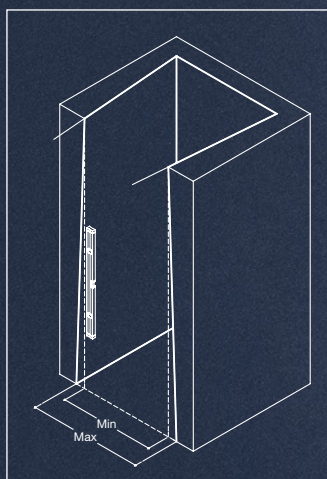
Uncomplicated and thought-through installation

It is likely, that the wall in your bathroom is not completely plumb. Maybe it has small recesses. Maybe it is slightly angled. However we do not think that this should cause the installation of the shower enclosure to present problems. Therefore, Dansani Shower is designed with a number of technical features that make it easy for the fitter to install your new Dansani Shower solution, even on very irregular surfaces. With plenty of opportunities for fine-tuning, you are certain to get a perfect result, irrespective of the solution you choose.

Measuring



Corner



Recess

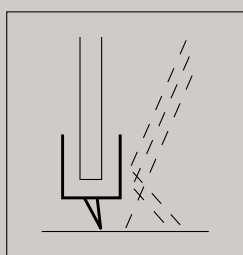
Irrespective of whether the wall has an inward or outward angle, the inclination becomes the difference between the minimum and maximum measurements. Use a plumbline to determine the difference along the height of the screen. Before ordering, always check that these measurements correspond to the min./max. measurements of the selected model. Please see the price list.

Reliable and well thought through construction

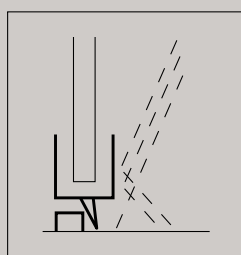
For Dansani functional design is also very much about safety and security. When it comes to everyday use as well as looking years ahead you can trust in the quality of our shower enclosures. That is why we use 6 mm hardened safety glass, and all our enclosure solutions are impact tested. Our unique profile that holds the glass securely in place also ensures that the glass fits perfectly. This feature provides a stable and safe showering solution, that will last for many years to come.

Dansani Match has been thoroughly tested in accordance with EU-regulations EN14428 in the following three areas:

- 01 Impact test - ensures the enclosure is strong enough to withstand the impact of the user losing their balance and falling against the glass panel.
- 02 Hardening test - to make sure that the glass has been fully hardened, and in the event of the panel shattering the very small pieces of glass will not be sharp (much like e.g. car windows).
- 03 Water test, that makes sure that only very minimal amounts of water droplets can escape during normal use.*



Rubber seal for shower doors where no floor profile is wanted.



Floor profile kit with rubber seal for showering solutions with shower doors (available to purchase separately).

CE



* Due to design reasons some models require additional parts to comply with the CE water test. Models with doors require a floor profile kit to comply with this regulation. In case of recess installation the wall profile no. 1 is also needed, see price list page 27.

Match / Product information

Match hinged and fixed panels

All Match hinged doors and fixed panels have been tested to comply with EN 14428:2015 referring to hardening of glass, stability and water tightness classification.

GLASS

6 mm hardened safety glass complying with EN12150 with EasyCare treatment on the side facing inwards. Clear glass and some models in frosted glass.

PROFILES

Strong aluminium profile with hardwearing, satin anodised surface.

HINGES

Rise and fall hinges that opens both inwards and outwards by 180 degrees. The door is held open at 90 degrees either way. Inside the hinge a waterproofing seal has been added.

MAGNETIC PROFILES

One removable magnetic profile is supplied with every door and fixed panel, that can be combined with profiles across the range. Once the magnet has been activated twice the polar is set so the two magnetic seals work together. The magnet is located inside a PVC profile, with a matt surface to ensure they do not stick together during prolonged times of little or no use.

FIXED PANEL

The glass panel can be adjusted with 20 mm in the wall profile, and is locked in place with PVC profiles inside the alu profile. The floor profile can be adjusted up to 6 mm horizontally and using the spacers provided to suit, 12 mm vertically. Alternatively, a 12 mm adjustable floor bracket can be used for wet room solutions where no seals are required.

DOORS

On models A, B and E the hinge can be adjusted with 20 mm in the wall profile for out of true applications. On fixed panel models C, D and F the glass panel is adjusted within the wall profile the same as for fixed panels. The floor profile can be adjusted up to 6 mm horizontally using the predrilled slot.

HANDLES

A standard chrome plated ABS knob handle is included with all doors. Optional alternative handles can be purchased separately.

FITTINGS

Floor bracket and bracket for telescopic rail support is constructed from chrome plated zinc-alloy. Cover caps and other fittings made from chrome plated ABS.

TELESCOPIC SUPPORT RAIL

Strong alloy rail with hardwearing, satin-anodised chrome plated surface with concealed wall fixing bracket. The support rail likewise has concealed fixing to the profile and is adjustable from 60 to 100 cm.

WALL SUPPORT

Strong alloy wall support with hardwearing, satin-anodised chrome plated surface with concealed wall fixing bracket

SEAL

Transparent PVC seal used with doors at floor level can easily be replaced if required over time. Taller seals can also be purchased separately if required for certain applications.

LEAD-TIME

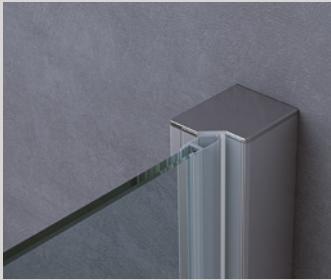
All Match models are in stock for fast supply with 1 door/panel in 1 box. All boxes can be handled by one person as they are below 30 kg. Accessories like support rails and alternative handles are packed separately.

WARRANTY

Dansani offers 10 years warranty against manufacturing defects on all Match models.

Exclusive, very strong and durable showertrays are available as optional extras for certain models.

For more detail please refer to the Dansani Air Shower brochure and www.dansani.co.uk.



MODEL 1 – RECESS PROFILE FOR DOOR A, B AND C

Recess profile 1 can be combined with door A, B and C. In this way there is adjustability on both sides with an overall adjustment possible of 40 mm.

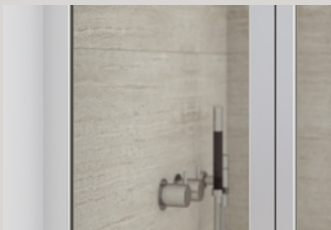
The angled magnetic catch ensures perfect closure every time. The profile can be fitted in both left and right-hand applications, without the need for tools.

MODEL 8 – RECESS PROFILE FOR DOOR A, B AND C

Recess profile 8 can be combined with door A, B and C. To be used where less adjustability is required for a slimmer look. Please note that using this profile means there is only adjustment of 20mm on the hinged door.

MODEL A AND E – HINGED DOOR

The large door provides easy access, whilst at the same time can be folded inwards freeing valuable floor space. With the slim profiles and the large areas of glass this makes for the most discreet option. Universal model that can fitted both left and right without the need for tools or on-site modification. Additional floor profile can be purchased for optimal water proofing and enables CE approval in accordance with EN 14428:2015.



THE SQUARE PROFILE

The slim and square profiles with softly curved corners give an elegant yet contemporary appearance. The glass as well as being held in place with silicone inside the profile furthermore has a hidden hook that secures the glass both top and bottom.



FLOOR PROFILE

Additional floor profile can be purchased and is placed on the outside of the enclosure door for optimum water proofing and enables CE approval in accordance with EN 14428:2015. This profile can easily be retro fitted as well.

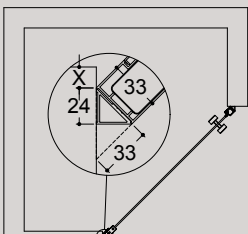
MODEL B – BIFOLD DOOR

Very practical model, that takes up minimum space when not in use. Folds inwards, thereby keeping the water droplets inside the wet area only. Can be fitted in both left and right hand situations without the need for modifications or tools.

MODEL C, F, G AND H – HINGED DOOR WITH IN-LINE PANEL

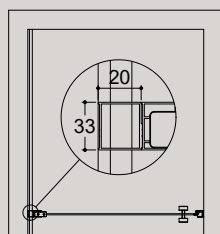
A hinged door combined with an in-line panel provides a solution where you can furnish up close to the shower enclosure without this interfering with the doors movement. The wall support attached to the fixed panel provides a stable and secure result.

X= MAX 25 mm



45 DEGREE ANGLED PROFILE

This 45 degree profile is used in neo angled recessed applications. Please note this will increase the overall width with 33 mm on each side.



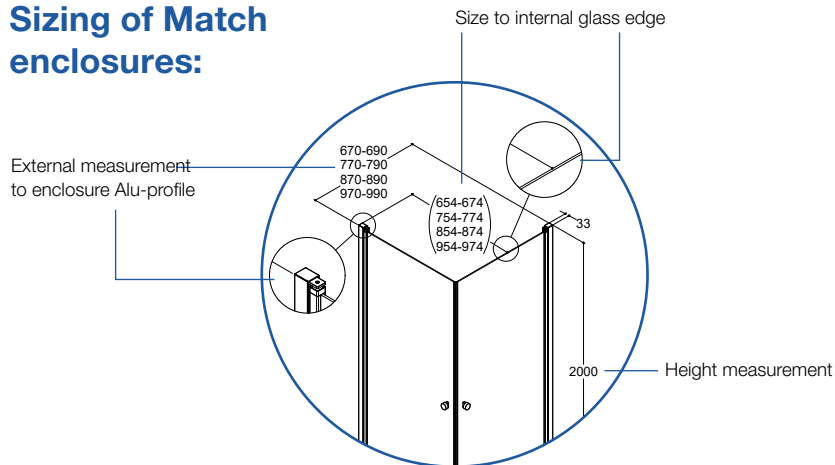
ADDITIONAL WALL PROFILE FOR EXPOSED WATER SUPPLY

This profile is used in connection with exposed water supply running on the outside of the wall. Can be combined with all variants of shower doors and fixed panels. The additional wall profile will make further adjustment between 20-40 mm depending on how straight the walls are.

MODEL D – FIXED PANEL

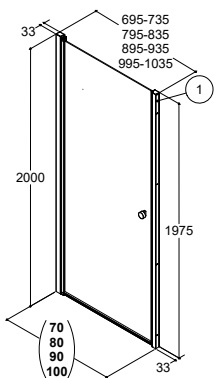
This model can be turnable and is easily adjusted using the telescopic support rail that can be cut to suit, when installed on its own. The fixed panel can also be installed with models A, B and C.

Sizing of Match enclosures:

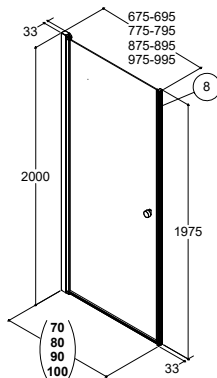


Model A

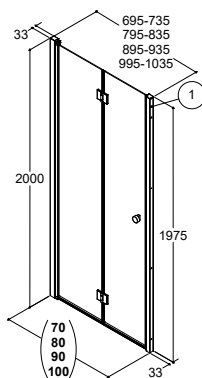
– hinged door



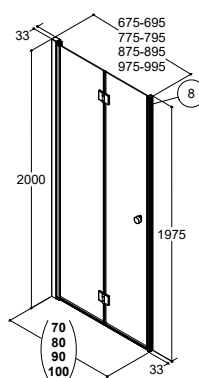
A + 1



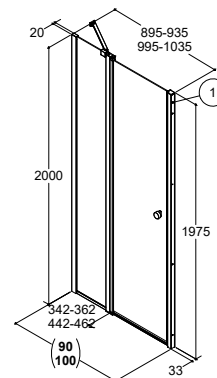
A + 8



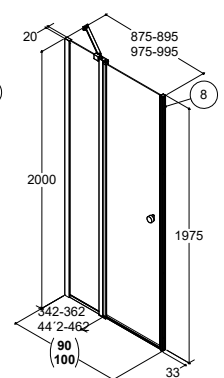
B + 1



B + 8



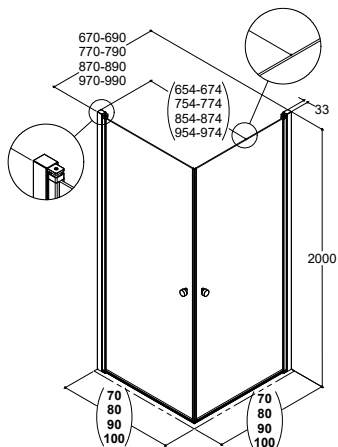
C + 1



C + 8

Model A

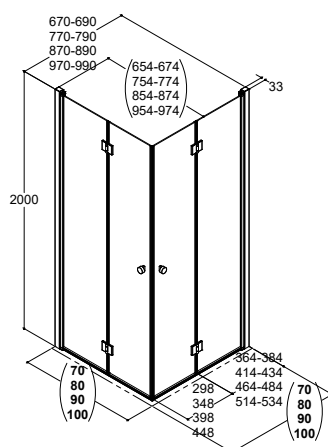
– hinged door



A + A

Model B

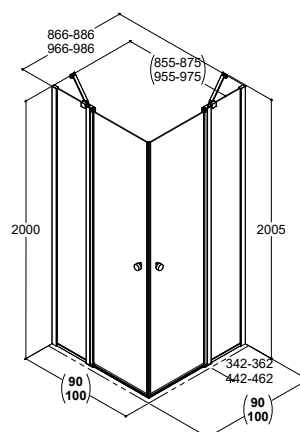
– bifold door



B + B

Model C

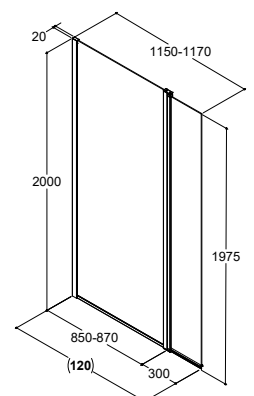
– hinged door with in-line panel



C + C

Model I

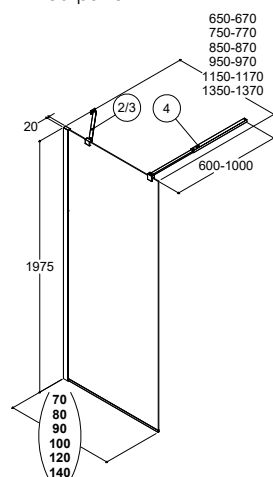
– fixed panel with flip-over panel



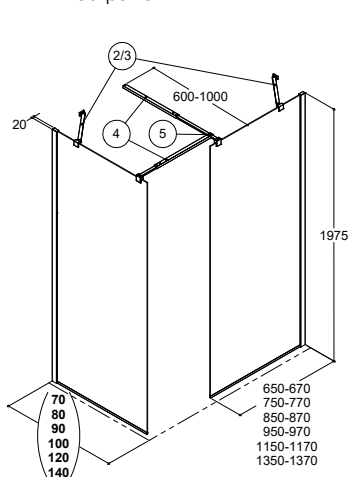
I

Model D

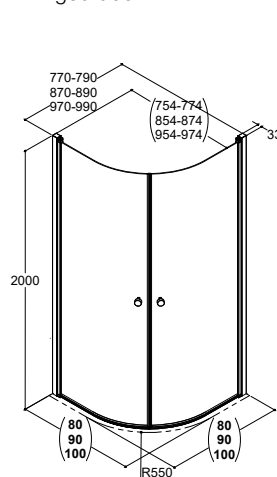
– fixed panel

**D****Model D**

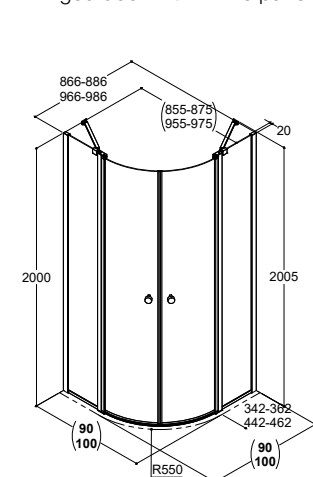
– fixed panel

**D + D****Model E**

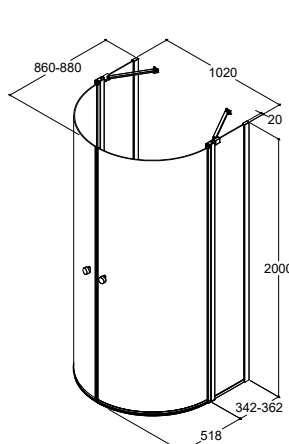
– hinged door

**E + E****Model F**

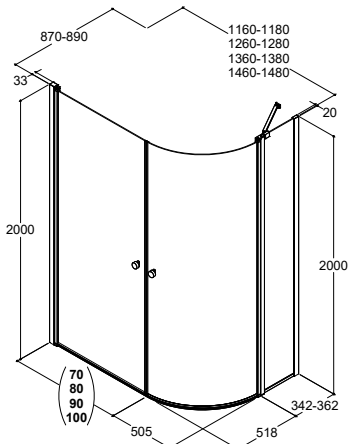
– hinged door with in-line panel

**F + F****Model G**

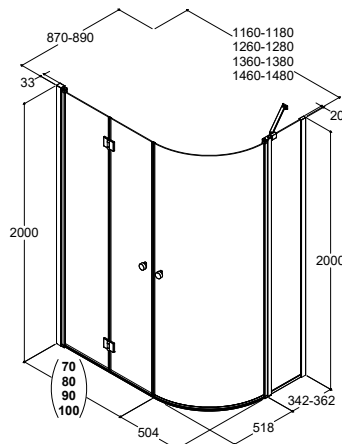
– quadrant enclosure door (90 degrees) with in-line panel

**G + G****Model G and A**

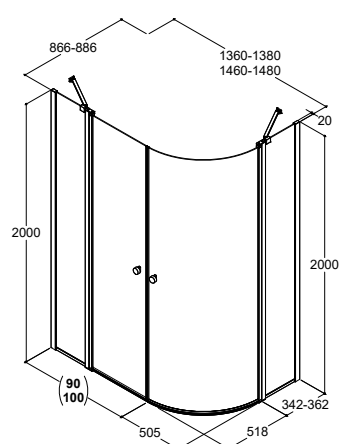
– quadrant enclosure door (90 degrees) with in-line panel and hinged door

**G + A****Model G and B**

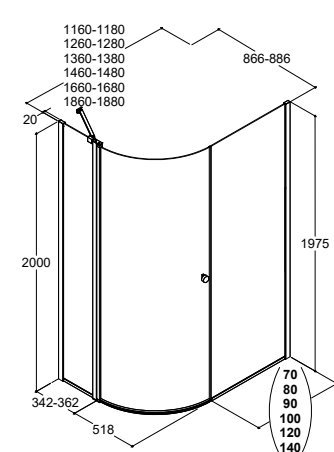
– quadrant enclosure door (90 degrees) with in-line panel and bifold door

**G + B****Model G and C**

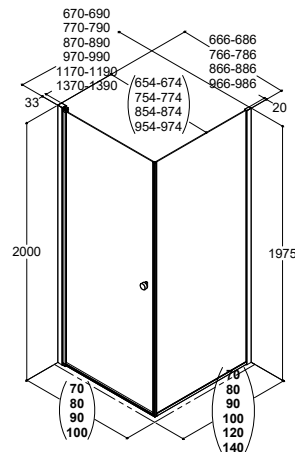
– quadrant enclosure door (90 degrees) with in-line panel and hinged door with in-line panel

**G + C****Model G and D**

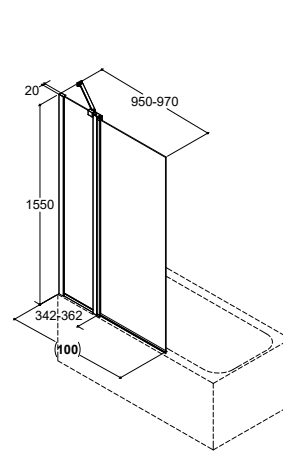
– quadrant hinged door (90 degrees) with in-line panel

**G + D****Model A and D**

– quadrant enclosure door (90 degrees) with in-line panel

**A + D****Model H**

– bath panel with hinged door

**H**

Our philosophy

Your bathroom is your personal breathing space, and no one can create it better than yourself. With Dansani, it is easy and inspiring to furnish your bathroom with functional and well thought-out solutions that adapt to the needs of the individual.

Danish design

The idea behind Danish design embraces functionality, simplicity, and naturalness expressed in a timeless design. This is the starting point for every product embraced by the Dansani brand.

Functionality

Our products should be easy and comfortable to use, as well as being able to adapt to the size of the space through smart functions that are practical and durable.

Craftsmanship

Both design and function must be supported by durable craftsmanship. The excellent cabinetry finish is consistent in all our products, evidenced by gorgeous materials and sustainable solutions.

Sustainability

At Dansani, being environmentally responsible is a given. Therefore, we have implemented several measures to reduce our environmental impact. But we also focus on our own work environment, and that our suppliers offer ethically responsible working conditions.



Dansani Ltd
7 Mermaid Walk
The Waterfront
Brighton Marina
East Sussex, BN2 5WA
T: +44 (0)800 58 71 725
F: +44 (0)800 58 71 726
mail@dansani.co.uk
www.dansani.co.uk

